

Party

Con un salpicado similar al confetti en su brillo
 With a confetti-like splash of brightness
 Avec son éclat semblable à celui des confettis



7x28
 2,75"x11,02"

COMPACGLASS
 GRES PORCELÁNICO ESMALTADO
 GLAZED PORCELAIN TILES
 GRÈS CÉRAMÉ ÉMAILLÉ



Rvto. / Wall / Rvtm.: Party Blue 7x28



Party Pink 7x28

Códigos de producto
Product codes / Codes des produits

7,5x15

Subway



7,5x15	9 mm
● Bco. Brillo M115 028.030.0063.11923 (GLO)	
● Bco. Mate M115 028.030.0174.11923 (MAT)	
● Negro M115 028.030.0003.11923 (GLO)	
● Negro Mate M115 028.030.1011.11923 (MAT)	
● Plata Mate P07 028.748.0438.11923 (MAT)	

7,5x15	11 mm
● Plata Brillo P07 028.748.1072.11923 (GLO)	
● Oro Mate P09 028.748.0439.11923 (MAT)	
● Oro Brillo P09 028.748.1071.11923 (GLO)	

6,5x20

Mayfair



6,5x20	9,5 mm
● Beige M90 015.511.0007.01955 (GLO)	
● Blanco Mate M90 015.511.0174.01955 (MAT)	
● Blanco M90 015.511.0012.01955 (GLO)	
● Grafito M90 015.511.0068.01955 (GLO)	
● Grana M90 015.511.0021.01955 (GLO)	
● Gris M90 015.511.0002.01955 (GLO)	
● Navi M90 015.511.0118.01955 (GLO)	

6,5x20	9,5 mm
● Negro M90 015.511.0003.01955 (GLO)	
● Negro Mate M90 015.511.1011.01955 (MAT)	
● Ocre M90 015.511.0052.01955 (GLO)	
● Perla M90 015.511.0037.01955 (GLO)	
● Tortora M90 015.511.0297.01955 (GLO)	
● Vert M90 015.511.0543.01955 (GLO)	

7,5x30

Aurea



7,5x30	10 mm
● Brass M70 027.890.1013.02463 (MAT)	
● Bronze M70 027.890.0815.02463 (MAT)	
● Gold M70 027.890.0189.02463 (MAT)	
● Gold Rose M70 027.890.1012.02463 (MAT)	
● Silver M70 027.890.0183.02463 (MAT)	

Aurea Via



7,5x30	10 mm
● Brass M70 027.890.1013.11620 (MAT)	
● Bronze M70 027.890.0815.11620 (MAT)	
● Gold M70 027.890.0189.11620 (MAT)	
● Gold Rose M70 027.890.1012.11620 (MAT)	
● Silver M70 027.890.0183.11620 (MAT)	

Aurea Floss



7,5x30	10 mm
● Brass M70 027.890.1013.11621 (MAT)	
● Bronze M70 027.890.0815.11621 (MAT)	
● Gold M70 027.890.0189.11621 (MAT)	
● Gold Rose M70 027.890.1012.11621 (MAT)	
● Silver M70 027.890.0183.11621 (MAT)	

Dual



7,5x30	10 mm
● Beige M70 027.890.0007.11745 (MAT)	
● Bianco M70 027.890.0150.11745 (MAT)	
● Grigio M70 027.890.0213.11745 (MAT)	
● Nero M70 027.890.0215.11745 (MAT)	
● Perla M70 027.890.0037.11745 (MAT)	
● Tortora M70 027.890.0297.11745 (MAT)	
● Oro Mate P14 028.231.0439.12170 (MAT)	
● Plata Mate P15 028.231.0438.12170 (MAT)	

7x28

Feel



7x28	9,5 mm
● Pearl M78 015.889.0169.02772 (GLO)	
● Ocre M78 015.889.0052.02772 (GLO)	
● Terra M78 015.889.0056.02772 (GLO)	
● Turquoise M78 015.889.0339.02772 (GLO)	

7x28	9,5 mm
● Greige M78 015.889.0408.02772 (GLO)	
● Aqua M78 015.889.0498.02772 (GLO)	
● Olive M78 015.889.0973.02772 (GLO)	

Party



7x28	9,5 mm
● Black M78 015.889.0157.11694 (GLO)	
● Blue M78 015.889.0111.11694 (GLO)	
● Brown M78 015.889.0109.11694 (GLO)	
● Grey M78 015.889.0161.11694 (GLO)	
● Pink M78 015.889.0305.11694 (GLO)	
● White M78 015.889.0108.11694 (GLO)	

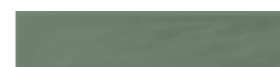
Toscana



7x28	9,5 mm
● Cotto M57 015.889.0154.02382 (MAT)	
● Siena M57 015.889.0053.02382 (MAT)	
● Mix M57 015.889.0100.02382 (MAT)	

7,5x30

Eleganza



7,5x30	10 mm
● Beige M62 027.890.0007.11183 (GLO)	
● Bianco M62 027.890.0150.11183 (GLO)	
● Blu M62 027.890.0158.11183 (GLO)	
● Grigio M62 027.890.0213.11183 (GLO)	
● Perla M62 027.890.0037.11183 (GLO)	

Fresh



7,5x30	10 mm
● Saggio M62 027.890.0942.11183 (GLO)	
● Siena M62 027.890.0053.11183 (GLO)	
● Terra M62 027.890.0056.11183 (GLO)	

Fresh



7,5x30	10 mm
● Apple M70 027.890.0876.01929 (MAT)	
● Citric M70 027.890.1017.01929 (MAT)	
● Nut M70 027.890.0310.01929 (MAT)	
● Sky M70 027.890.0524.01929 (MAT)	
● White M70 027.890.0108.01929 (MAT)	

7,5x30	10 mm
● Mix Apple M70 027.890.0876.11713 (MAT)	
● Mix Citric M70 027.890.1017.11713 (MAT)	
● Mix Nut M70 027.890.0310.11713 (MAT)	
● Mix Sky M70 027.890.0524.11713 (MAT)	

7x28

Brickwall



7x28	9,5 mm
● Blanco M57 015.889.0012.02961 (MAT)	
● Perla M57 015.889.0037.02961 (MAT)	
● Sand M57 015.889.0119.02961 (MAT)	
● Tortora M57 015.889.0297.02961 (MAT)	
● Grafito M57 015.889.0068.02961 (MAT)	
● Negro M57 015.889.0003.02961 (MAT)	
● Cotto M57 015.889.0154.02961 (MAT)	

Slate way



7x28	9,5 mm
● Ash M57 015.889.0344.11381 (MAT)	
● Brown M57 015.889.0109.11381 (MAT)	
● Green M57 015.889.0110.11381 (MAT)	
● Ocean M57 015.889.0171.11381 (MAT)	
● Pearl M57 015.889.0169.11381 (MAT)	

Alloy



7,5x30	10 mm
● Azzurro M62 027.890.0151.10476 (MAT)	
● Coal M62 027.890.0298.10476 (MAT)	
● Copper M62 027.890.0287.10476 (MAT)	
● Grey M62 027.890.0161.10476 (MAT)	

7,5x30	10 mm
● Mint M62 027.890.0824.10476 (MAT)	
● Pearl M62 027.890.0169.10476 (MAT)	

Grace



7,5x30	10 mm
● Aqua M62 027.890.0498.02769 (GLO)	
● Blue M62 027.890.0111.02769 (GLO)	
● Bone M62 027.890.0413.02769 (GLO)	
● Brown M62 027.890.0109.02769 (GLO)	

Lincoln M



7,5x30	10 mm
● Gold M62 027.890.0189.02769 (GLO)	
● Green M62 027.890.0110.02769 (GLO)	
● Nude M62 027.890.0383.02769 (GLO)	
● Ocre M62 027.890.0052.02769 (GLO)	
● Taupe M62 027.890.0285.02769 (GLO)	

7,5x30	10 mm
● Cream M62 027.890.0163.10092 (MAT)	
● White M62 027.890.0108.10092 (MAT)	

Mayolica



7,5x30 ▼ 10 mm

● Artico	M62 027.890.0393.01518	
● Blanco	M62 027.890.0012.01518	
● Blanco Mate	M62 027.890.0174.01518	
● Beige	M62 027.890.0007.01518	
● Celeste	M62 027.890.0055.01518	
● Menta	M62 027.890.0548.01518	



7,5x30 ▼ 10 mm

● Negro	M62 027.890.0003.01518	
● Negro Mate	M62 027.890.1011.01518	
● Nude	M62 027.890.0383.01518	
● Perla	M62 027.890.0037.01518	
● Tortora	M62 027.890.0297.01518	
● Turquesa	M62 027.890.0027.01518	

Mayolica Rust



7,5x30 ▼ 10 mm

● Beige	M62 027.890.0007.11615	
● Blanco	M62 027.890.0012.11615	
● Celeste	M62 027.890.0055.11615	
● Menta	M62 027.890.0548.11615	
● Nude	M62 027.890.0383.11615	



7,5x30 ▼ 10 mm

● Perla	M62 027.890.0037.11615	
● Tortora	M62 027.890.0297.11615	

7,5x30

Spring



7,5x30 ▼ 10 mm

● Azul	M62 027.890.0004.11486	
● Blanco	M62 027.890.0012.11486	
● Blanco Mate	M62 027.890.0174.11486	
● Beige	M62 027.890.0007.11486	
● Carmin	M62 027.890.0195.11486	
● Gris	M62 027.890.0002.11486	



7,5x30 ▼ 10 mm

● Negro	M62 027.890.0003.11486	
● Negro Mate	M62 027.890.1011.11486	
● Ocre	M62 027.890.0052.11486	
● Perla	M62 027.890.0037.11486	
● Tortora	M62 027.890.0297.11486	
● Verde	M62 027.890.0005.11486	

Torano M



7,5x30 ▼ 10 mm

● Dorado	M62 027.890.0103.10106	
----------	------------------------	--

Lincoln M

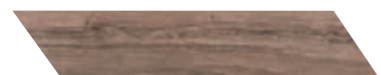


8x40 ▼ 8,5 mm

● Cream	M106 015.223.0163.10092	
● White	M106 015.223.0108.10092	

8x40

Rovere



8x40 ▼ 8,5 mm

● Honey	M106 015.223.0358.09741	
● Bark	M106 015.223.0476.09741	
● Brown	M106 015.223.0109.09741	
● Desert	M106 015.223.0364.09741	

Oldmanor



8x40 ▼ 8,5 mm

● Ambar	M106 015.223.0126.01406	
● Arena	M106 015.223.0017.01406	
● Nacar	M106 015.223.0030.01406	
● Tabaco	M106 015.223.0113.01406	

Torano M



8x40 ▼ 8,5 mm

● Dorado	M106 015.223.0103.10106	
----------	-------------------------	--

Toscana



8x40 ▼ 8,5 mm

● Cotto	M106 015.223.0154.02382	
● Siena	M106 015.223.0053.02382	
● Mix	M106 015.223.0100.02382	

8x40

Oldmanor



8x44,2 ▼ 8,5 mm

● Nacar	M70 015.681.0030.01406	
● Ambar	M70 015.681.0126.01406	
● Tabaco	M70 015.681.0113.01406	
● Arena	M70 015.681.0017.01406	

Rovere



8x44,2 ▼ 8,5 mm

● Honey	M70 015.681.0358.09741	
● Bark	M70 015.681.0476.09741	
● Brown	M70 015.681.0109.09741	
● Desert	M70 015.681.0364.09741	

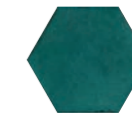
8x44,2

Grace



13x15 Hex ▼ 8,5 mm

● Aqua	M134 015.056.0498.02769	
● Blue	M134 015.056.0111.02769	
● Bone	M134 015.056.0413.02769	
● Brown	M134 015.056.0109.02769	
● Gold	M134 015.056.0189.02769	

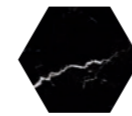


13x15 Hex ▼ 8,5 mm

● Green	M134 015.056.0110.02769	
● Nude	M134 015.056.0383.02769	
● Ocre	M134 015.056.0052.02769	
● Taupe	M134 015.056.0285.02769	

13x15

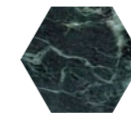
Hexa Deva



13x15 Hex

● Nero	M134 015.056.0215.12226	
--------	-------------------------	--

Hexa Euphoria



13x15 Hex

● Green	M134 015.056.0110.12221	
---------	-------------------------	--

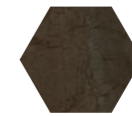
Hexa Grotta



13x15 Hex

● Oro	M134 015.056.0032.12227	
-------	-------------------------	--

Hexa Jatobà

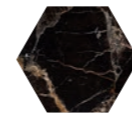


13x15 Hex

● Brown	M134 015.056.0109.12228	
---------	-------------------------	--

13x15

Hexa Laurants



13x15 Hex

● Brown	M134 015.056.0109.12222	
---------	-------------------------	--

Hexa Nebula



13x15 Hex

● Almond	M134 015.056.0097.12223	
----------	-------------------------	--

Hexa Pisa



13x15 Hex

● Gold	M134 015.056.0189.12224	
--------	-------------------------	--

Hexa Torano

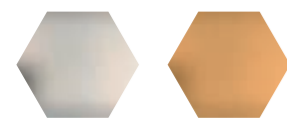


13x15 Hex

● Dorado	M134 015.056.0103.12225	
----------	-------------------------	--

13x15

Golden Hexa



13x15 Golden Hexa

- Plata Mate M134 025.956.0438.12244
- Oro Mate M134 025.956.0439.12244

15x15

Feel



15x15

8,5 mm

- Pearl M118 015.315.0169.02772
- Ocre M118 015.315.0052.02772
- Terra M118 015.315.0056.02772
- Turquoise M118 015.315.0339.02772
- Greige M118 015.315.0408.02772
- Aqua M118 015.315.0498.02772
- Olive M118 015.315.0973.02772

Slate Way



15x15

8,5 mm

- Ash M110 015.315.0344.11381
- Brown M110 015.315.0109.11381
- Green M110 015.315.0110.11381
- Ocean M110 015.315.0171.11381
- Pearl M110 015.315.0169.11381

22,3x22,3

Art Lepic



22,3x22,3

11 mm

- Lepic M68 015.826.0001.00484

Art Monet



22,3x22,3

11 mm

- Monet M68 015.826.0001.02600

Art Renoir



22,3x22,3

11 mm

- Renoir M68 015.826.0001.02604

Art Rodin



22,3x22,3

11 mm

- Rodin M68 015.826.0001.02602

20,4x20,4

Alloy



20,4x20,4

- Azzurro M76 015.921.0151.10476
- Coal M76 015.921.0298.10476
- Copper M76 015.921.0287.10476
- Grey M76 015.921.0161.10476
- Mint M76 015.921.0824.10476
- Pearl M76 015.921.0169.10476

22,3x22,3

Art

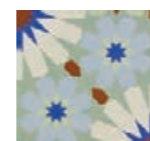


22,3x22,3

11 mm

- Blanco M68 015.826.0012.00497
- Gris M68 015.826.0002.00497
- Marengo M68 015.826.0028.00497

Art Cassat



22,3x22,3

11 mm

- Cassat M68 015.826.0001.00481

Art Seurat

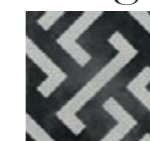


22,3x22,3

11 mm

- Seurat M68 015.826.0001.00483

Art Signac



22,3x22,3

11 mm

- Signac M68 015.826.0001.00482

Art Sysley

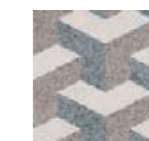


22,3x22,3

11 mm

- Sysley M68 015.826.0001.02603

Dc. Corbusier



22,3x22,3

11 mm

- Corbusier M68 015.826.0001.00331

Art Cezzane



22,3x22,3

11 mm

- Cezzane M68 015.826.0001.00495

Art Corot



22,3x22,3

11 mm

- Corot M68 015.826.0001.00487

Art Degas



22,3x22,3

11 mm

- Blanco M68 015.826.0012.02601
- Negro M68 015.826.0003.02601

Art Gauguin



22,3x22,3

11 mm

- Gauguin M68 015.826.0001.00486

Dc. Erte



22,3x22,3

11 mm

- Negro M68 015.826.0003.00325
- Blanco M68 015.826.0012.00325

Dc. Dunant

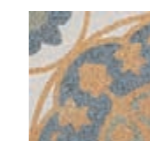


22,3x22,3

11 mm

- Dunant M68 015.826.0001.00344

Dc. Fontana

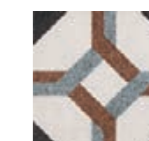


22,3x22,3

11 mm

- Rojo M68 015.826.0008.00349
- Oro M68 015.826.0032.00349

Dc. Hofer



22,3x22,3

11 mm

- Hofer M68 015.826.0001.00341

22,3x22,3

Dc. Horta



22,3x22,3

11 mm

● Horta M68 015.826.0001.00339

Dc. Icart



22,3x22,3

11 mm

● Icart M68 015.826.0001.00337

Dc. Klee



22,3x22,3

11 mm

● Klee M68 015.826.0001.00334

Dc. Lawrie



22,3x22,3

11 mm

● Lawrie M68 015.826.0001.00340

Dc. Lempicka

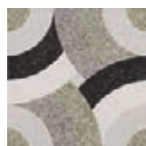


22,3x22,3

11 mm

● Lempicka M68 015.826.0001.00332

Dc. Moser



22,3x22,3

11 mm

● Moser M68 015.826.0001.00346

Dc. Munch



22,3x22,3

11 mm

● Moser M68 015.826.0001.00342

Dc. Nolde

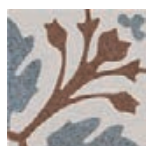


22,3x22,3

11 mm

● Nolde M68 015.826.0001.00333

Dc. Preiss

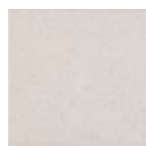


22,3x22,3

11 mm

● Preiss M68 015.826.0001.00343

Deco



22,3x22,3

11 mm

● Blanco M68 015.826.0012.00582

● Negro M68 015.826.0003.00582

Diagonals



22,3x22,3

11 mm

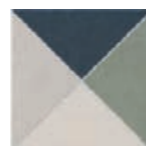
● Ocre M68 015.826.0052.07408

● Navi M68 015.826.0118.07408

● Ash M68 015.826.0344.07408

● Sage M68 015.826.0346.07408

Diamond



22,3x22,3

11 mm

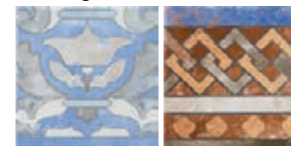
● Ocre M68 015.826.0052.07410

● Navi M68 015.826.0118.07410

● Sage M68 015.826.0346.07410

22,3x22,3

Empoli



22,3x22,3

11 mm

● Aquamarine M68 015.826.0377.09793

● Earth M68 015.826.0469.09793

● Skyblu M68 015.826.0379.09793

Lambeth



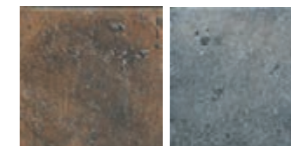
22,3x22,3

11 mm

● Cement M68 015.826.0418.01904

● Natural M68 015.826.0102.01904

Senesi



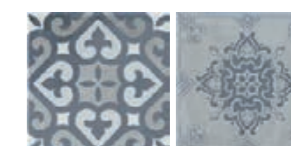
22,3x22,3

11 mm

● Copper M68 015.826.0287.09792

● Ferro M68 015.826.0508.09792

Sloane



22,3x22,3

11 mm

● Cement M68 015.826.0418.01913

19,8x22,8

Kingsbury



19,8x22,8 Hex

10 mm

● Blanco M90 015.292.0012.01761

● Grafito M90 015.292.0068.01761

● Grana M90 015.292.0021.01761

● Navi M90 015.292.0118.01761

● Negro M90 015.292.0003.01761

● Vert M90 015.292.0543.01761

● Ocre M90 015.292.0052.01761

Lambeth



19,8x22,8

10 mm

● Cement M90 015.292.0418.01904

● Natural M90 015.292.0102.01904

Mayfair



19,8x22,8 Hex

10 mm

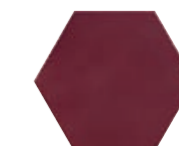
● Beige M90 015.292.0007.01955

● Blanco M90 015.292.0012.01955

● Grafito M90 015.292.0068.01955

● Grana M90 015.292.0021.01955

● Gris M90 015.292.0002.01955



19,8x22,8 Hex

10 mm

● Navi M90 015.292.0118.01955

● Negro M90 015.292.0003.01955

● Ocre M90 015.292.0052.01955

● Perla M90 015.292.0037.01955

● Tortora M90 015.292.0297.01955

● Vert M90 015.292.0543.01955

Lincoln M



19,8x22,8

10 mm

● Cream M90 015.292.0163.10092

● White M90 015.292.0108.10092

Oldmanor



19,8x22,8

10 mm

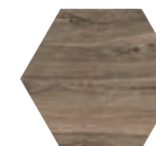
● Tabaco M90 015.292.0113.01406

● Nacar M90 015.292.0030.01406

● Arena M90 015.292.0017.01406

● Ambar M90 015.292.0126.01406

Rovere



19,8x22,8

10 mm

● Honey M90 015.292.0358.09741

● Bark M90 015.292.0476.09741

● Brown M90 015.292.0109.09741

● Desert M90 015.292.0364.09741

Sloane



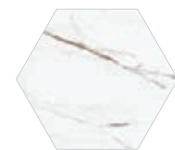
19,8x22,8

10 mm

● Cement M90 015.292.0418.01913

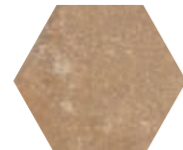
Códigos de producto
Product codes / Codes des produits

19,8x22,8
Torano M



19,8x22,8
10 mm
● Dorado M90 015.292.0103.10106

25,8x29
Toscana



25,8x29 Hex
11 mm
● Cotto M80 015.122.0154.02382
● Siena M80 015.122.0053.02382
● Mix M80 015.122.0100.02382

1,2x30
Trim



1,2x30 Basic
● Beige P13 028.125.0007.11798
● Blanco P13 028.125.0012.11798
● Blanco Mate P13 028.125.0174.11798
● Gris P13 028.125.0002.11798
● Negro P13 028.125.0003.11798
● Negro Mate P13 028.125.1011.11798
● Perla P13 028.125.0037.11798
● Tortora P13 028.125.0297.11798

1,2x30
Trim



1,2x30 Eleganza
● Beige P15 028.125.0007.11183
● Perla P15 028.125.0037.11183
● Siena P15 028.125.0053.11183
● Terra P15 028.125.0056.11183
● Bianco P15 028.125.0150.11183
● Blu P15 028.125.0158.11183
● Grigio P15 028.125.0213.11183
● Saggio P15 028.125.0942.11183

1,5x20
Trim



1,5x20 Mayfair

● Beige P07 028.475.0007.01955
● Blanco P07 028.475.0012.01955
● Blanco Mate P07 028.475.0174.01955
● Gris P07 028.475.0002.01955
● Negro P07 028.475.0003.01955
● Negro Mate P07 028.475.1011.01955
● Perla P07 028.475.0037.01955
● Tortora P07 028.475.0297.01955

Empaquetado
Packaging/Emballage

Formato	pz/cj	m²/cj	cj/pl	m²/pl	kg/cj	kg/pl
13x15 Hex	24	0.31	104	32.24	6.25	670.00
15x15	20	0.45	108	48.60	8.60	948.80
20,4x20,4	25	1.04	45	46.80	22.80	1.046.00
19,8x22,8 Hex	24	0.84	48	40.32	18.00	884.00
25,8x29 Hex	18	1.00	48	48.00	22.50	1,100.00
22,3x22,3	20	1.00	45	45.00	24.00	1,100.00
6,5x20	27	0.35	143	50.05	6.85	999.55
7,5x15	44	0.50	120	60.00	8.00	980.00
7,5x30	25	0.56	121	67.76	9.00	1,109.00
7x28	27	0.53	121	64.13	10.70	1,314.70
8x40	30	0.96	65	62.40	16.63	1,100.95
1,2x30	45	-	-	-	1.85	-
1,5x20	30	-	-	-	1.20	-



Características técnicas
Technical features
Caractéristiques techniques

COMPACGLASS
GRES PORCELÁNICO ESMALTADO
GLAZED PORCELAIN TILES
GRÈS CÉRAMÉ ÉMAILLÉ

	GRUPO Bla (GL) Absorción de agua < 0,5% GROUP Bla (GL) Water absorption < 0,5% GROUPE Bla (GL) Absorption d'eau < 0,5%	NORMAS DE ENSAYO STANDARD NORMES D'ESSAI	VALORES PRESCRITOS NORMA EN 14411 VALUE REQUIRED BY EN 14411 STANDARD VALEURS PRESCRITES NORME EN 14411	VALOR MEDIO AVERAGE VALUE VALEUR MOYENNE
Características dimensionales Dimensional features Caractéristiques dimensionnelles		ISO 10545-2		Cumple la norma Conforms to standard Satisfait à la norme
Absorción de agua Water absorption Absorption d'eau		ISO 10545-3	< 0,5%	0,1%
Resistencia a la flexión Modulus of rupture Résistance à la flexion	Fuerza de rotura Breaking strength Force de rupture	ISO 10545-4	> 35 N/mm2 > 1300 N	35 - 45 N/mm2 1600-2400 N
Resistencia a la abrasión superficial Resistance to surface abrasion Résistance à l'abrasion de surface		ISO 10545-7	Clase indicada por el fabricante Abrasion class indicated by the manufacturer Classe indiquée par le fabricant	Según Modelos According to models Selon modèles
Dilatación térmica lineal Linear thermal expansion Dilatation thermique linéaire		ISO 10545-8	Método de ensayo disponible Test method available Méthode d'essai disponible	<7,0 x 10 ⁻⁶ °C ⁻¹
Resistencia al choque térmico Thermal shock resistance Résistance au choc thermique		ISO 10545-9	Método de ensayo disponible Test method available Méthode d'essai disponible	Resiste Resists Résiste
Resistencia al cuarteo Crazing resistance Résistance au tressailage		ISO 10545-11	Exigida Required Exigée	Resiste Resists Résiste
Resistencia a la helada Frost resistance Résistance au gel		ISO 10545-12	Método de ensayo disponible Test method available	Resiste Resists Résiste
Resistencia química Chemical resistance Résistance chimique	Ácidos y bases Acids and bases Acides et bases Productos de limpieza y reactivos de piscinas Cleaning products and pool reactive agents Produits de nettoyage et réactifs de piscines	ISO 10545-13	Método de ensayo disponible Test method available Méthode d'essai disponible Mínimo GB Minimum GB Minimum GB	Cumple la norma Conforms to standard Satisfait à la norme Clase GA Class GA Classe GA
Resistencia a las manchas Resistance to stains Résistance aux taches		ISO 10545-14	Mínimo clase 3 Minimum class 3 Minimum classe 3	Cumple la norma Conforms to standard Satisfait à la norme

Fachadas Edificios /
Façade










Residenciales /
Residential

Características técnicas

Technical features

Caractéristiques techniques

PASTABLANCA
 RVTO. PASTA BLANCA MONOPOROSA
 WHITE BODY WALL TILES MONOPOROSA
 REVÊTEMENT PÂTE BLANCHE

	GRUPO BIII (GL) Absorción de agua > 10% GROUP BIII (GL) Water absorption > 10% GROUPE BIII (GL) Absorption d'eau > 10%	NORMAS DE ENSAYO STANDARD NORMES D'ESSAI	VALORES PRESCRITOS NORMA EN 14411 VALUE REQUIRED BY EN 14411 STANDARD VALEURS PRESCRITES NORME EN 14411	VALOR MEDIO AVERAGE VALUE VALEUR MOYENNE
	Características dimensionales Dimensional features / Caractéristiques dimensionnelles	ISO 10545-2		Cumple la norma Conforms to standard Satisfait à la norme
	Absorción de agua Water absorption / Absorption d'eau	ISO 10545-3	> 10%	16%
	Resistencia a la flexión Modulus of rupture Résistance à la flexion	ISO 10545-4	> 12 N / mm ² > 600 N	20 - 30 N / mm ² 700 - 1000 N
	Resistencia a la abrasión superficial Resistance to surface abrasion / Résistance à l'abrasion de surface	ISO 10545-7	Clase indicada por el fabricante Abrasion class indicated by the manufacturer / Classe indiquée par le fabricant	No aplica Not apply Non applicable
	Dilatación térmica lineal Linear thermal expansion / Dilatation thermique linéaire	ISO 10545-8	Método de ensayo disponible Test method available Méthode d'essai disponible	<7,0 x 10 ⁻⁶ °C ⁻¹
	Resistencia al choque térmico Thermal shock resistance / Résistance au choc thermique	ISO 10545-9	Método de ensayo disponible Test method available Méthode d'essai disponible	Resiste Resists Résiste
	Resistencia al cuarteo Crazing resistance / Résistance au tressailage	ISO 10545-11	Exigida Required Exigée	Resiste Resists Résiste
	Resistencia química Chemical resistance Résistance chimique	ISO 10545-13	Método de ensayo disponible Test method available Méthode d'essai disponible Mínimo GB Minimum GB Minimum GB	Cumple la norma Conforms to standard Satisfait à la norme Clase GA Class GA Classe GA
	Resistencia a las manchas Resistance to stains / Résistance aux taches	ISO 10545-14	Mínimo clase 3 Minimum class 3 Minimum classe 3	Cumple la norma Conforms to standard Satisfait à la norme



Rvto. / Wall / Rvrm.: Feel Terra 15x15 / Feel Greige 15x15
 Pvto. / Floor / Sol: Mosel Ash 60x60